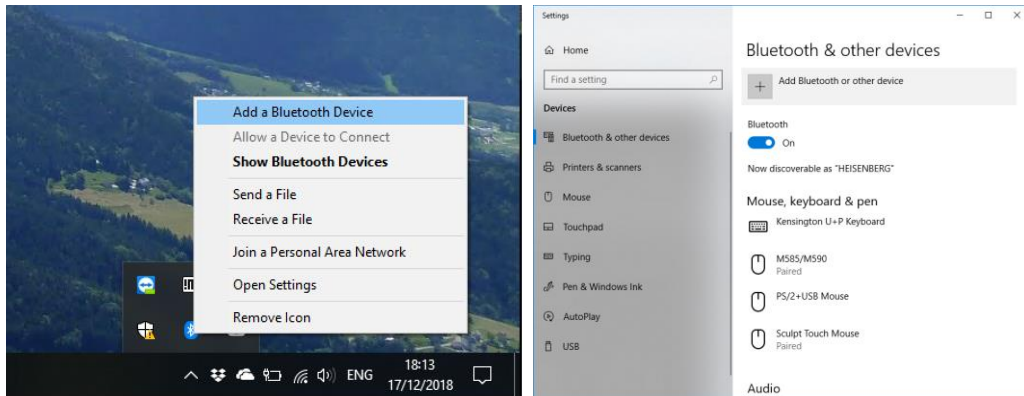


T-Bot Setup on Windows 10

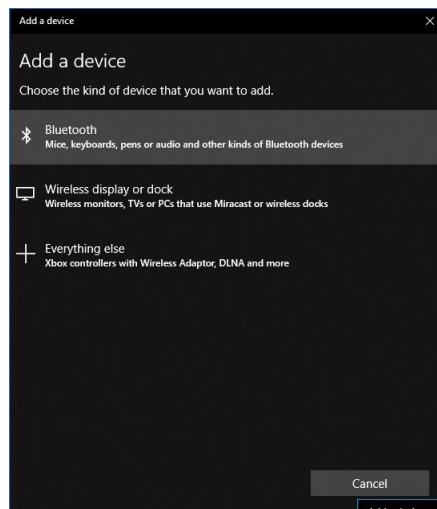
Connect T-Bot to Bluetooth

First you must pair your computer with the T-Bot:

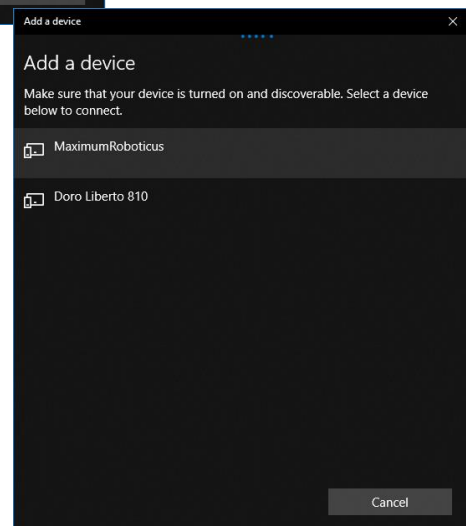
1. Ensure your Bluetooth is enabled on your computer and that the T-Bot is on and the red light on the Bluetooth module is flashing quickly (if flashing slowly, turn off and on again).
2. Open the “Add Bluetooth Device” screen by right clicking on the Bluetooth Icon in the System Tray or going directly to the settings:



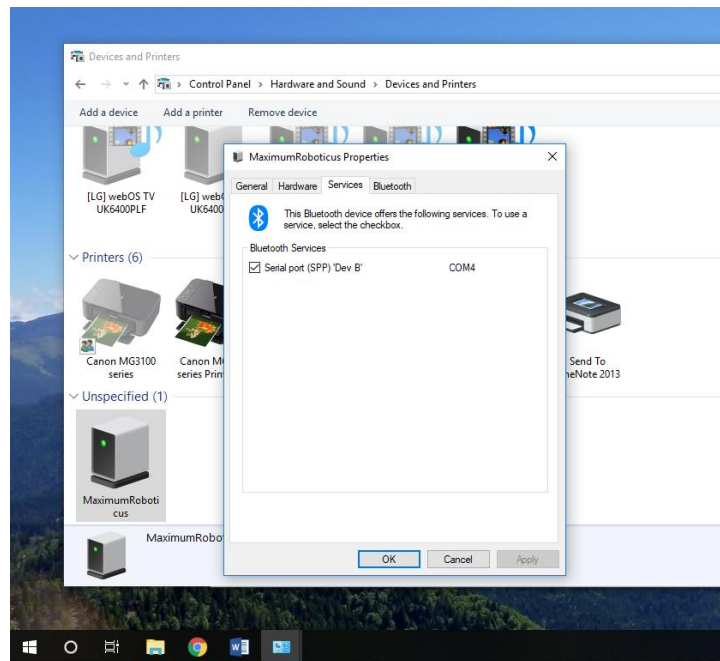
3. Select “Add Bluetooth or other device” then select “Bluetooth” on the following screen.



4. Bluetooth devices in the surrounding area will be picked up, select your T-Bot (having named it previously using the Arduino setup script). Click on the device and enter the PIN code (the default is usually 1234, though it may also be 0000 or 1111).
5. The device is now paired. Window’s assigned the device a pseudo-COM port (like USBs) that we can use to send and receive messages through. To find the assigned COM port, head to the Control Panel (type “Control Panel” into the search bar), then goto “Hardware and Sound”, then “Devices and Printers”.
6. Find the T-Bot (usually under “Unspecified”), right-click and got to “Properties”. Select the “Services”



tab and the Bluetooth Serial Port will be displayed as shown below. Take note of the “COM#” value – you will need this later.



Install and use pySerial

1. Install Anaconda Python 3.x <https://www.anaconda.com/download/>
2. Install pySerial: Open a command prompt, type “pip install pySerial”
3. Here is an example script:

```
import serial
import numpy as np
import matplotlib.pyplot as plt

port = 'COM5' # Device>Services>Serial Port
baud = 38400 # Get from TBot.ino
bluetooth = serial.Serial(port,baud)

print('write')
bluetooth.write(b'BOOP'+str.encode(str(5)))
print('read')
data = bluetooth.readline().decode().strip().split()
```